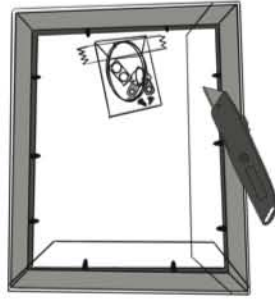


# Frame Center's Guide For Readymades

## What you need

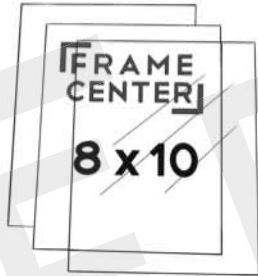
- Frame Center Readymade
- Artwork
- Razor or Scissors
- Flathead Screwdriver
- Alcohol Wipes or Rubbing Alcohol + Rag



Cut open packaging with razor or scissors. Cut from the back to avoid damaging frame.



Set aside hardware bag and use a flathead screwdriver to push up all the flexpoints



Inside each frame is a piece of foamboard, a label and a piece of glass. In some cases the label may be adhered to the foamboard.



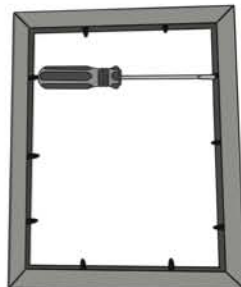
We recommend cleaning the piece of glass with rubbing alcohol and a rag or with alcohol wipes. Make sure to let the glass fully dry before putting on your artwork.



Set your artwork onto the piece of foamboard provided. Then place the piece of glass on top, making sure there is nothing inbetween the glass and the artwork.



Place your readymade frame on top. Double check that the piece is clean.



Push all of the flexpoints back down to secure everything in place.

See back for instructions on how to attach your included hardware to your frame.

Check out our Socials for more inspo/help



@framecenter



@FrameCenterHanover



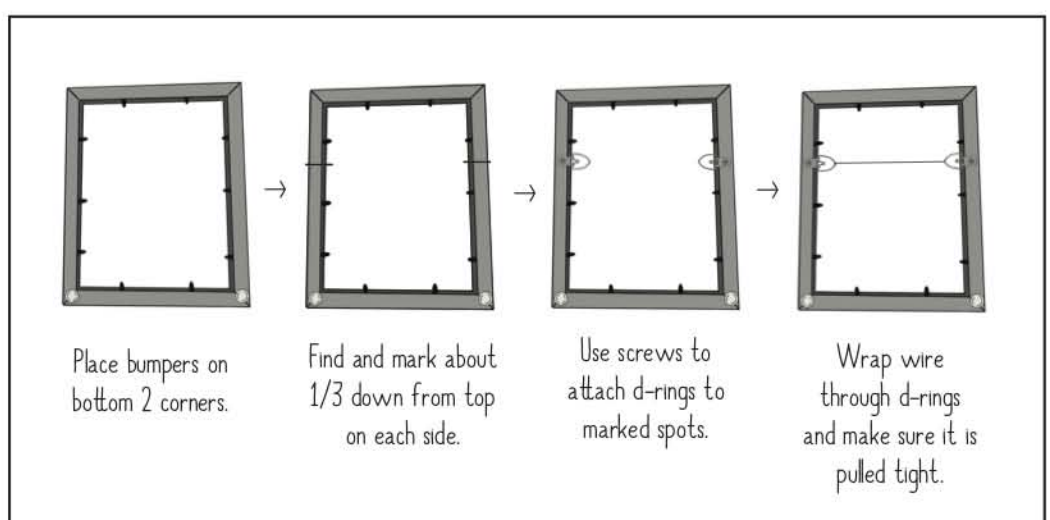
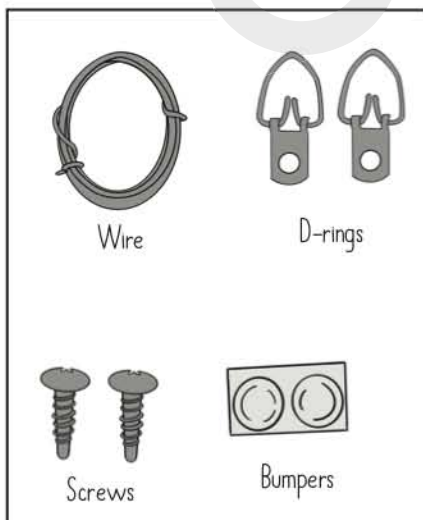
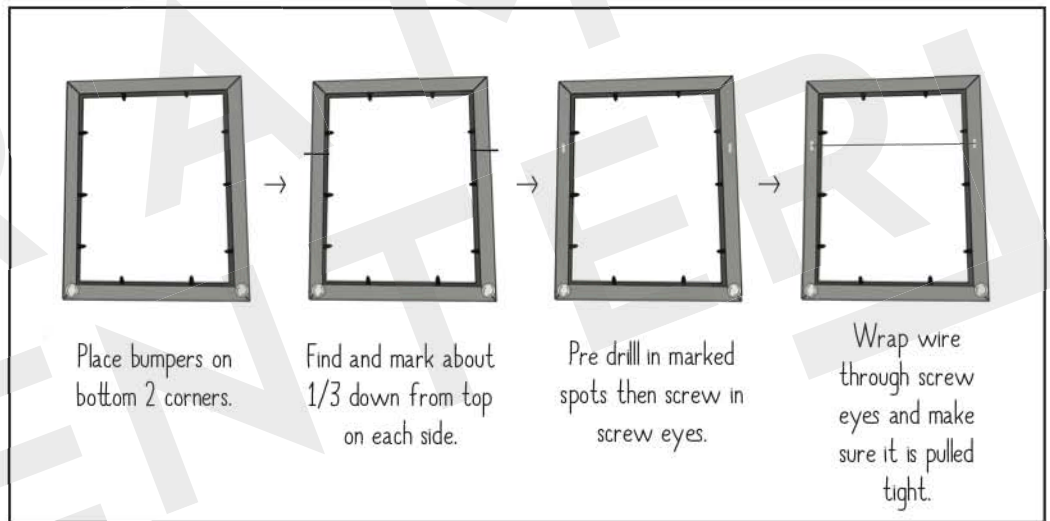
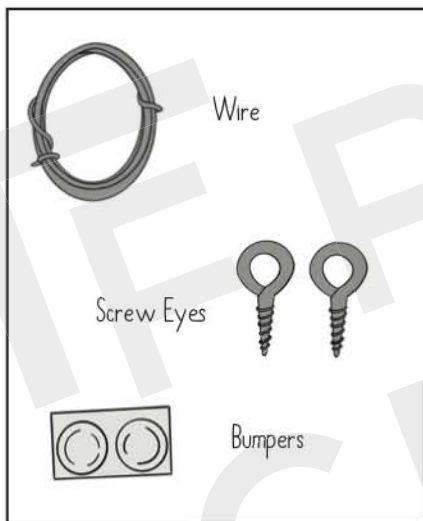
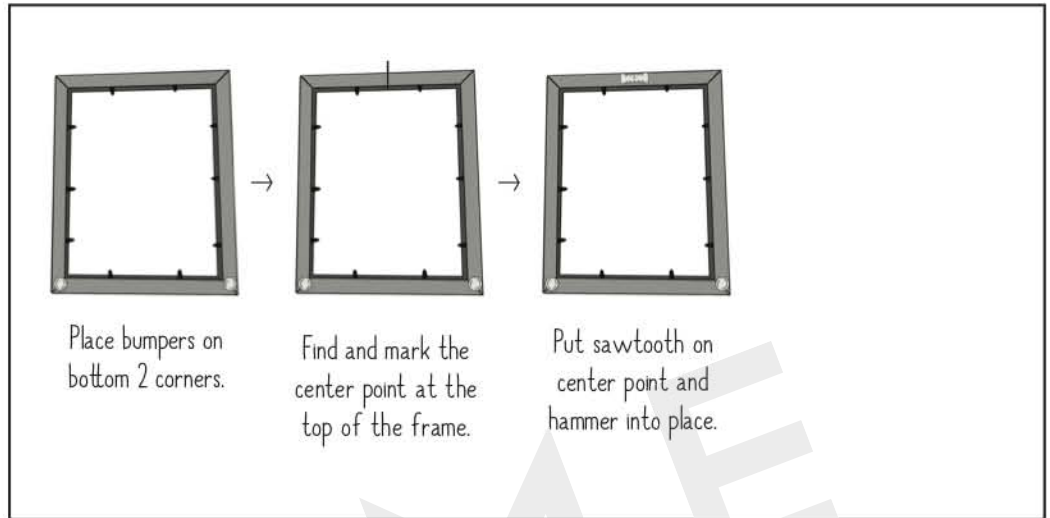
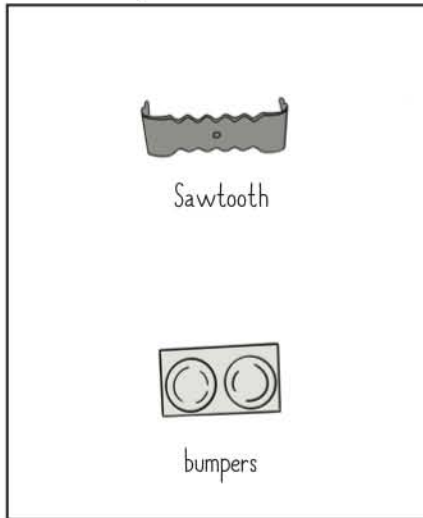
@framecenterhanover



Frame Center

## Which set of hardware do you have?

## How to attach your hardware



Check out our Socials for more inspo/help

 @framecenter

 @FrameCenterHanover

 @framecenterhanover

 Frame Center